

CARBON MONOXIDE - THE SILENT KILLER

Carbon Monoxide (CO) is a colorless, tasteless, and virtually odorless gas. It is produced by the incomplete burning of solid, liquid, or gaseous fuels. Appliances such as furnaces, ranges, water heaters, and room heaters which are fueled by natural gas, oil, kerosene, liquefied petroleum, coal, or wood can produce CO. Burning charcoal and running cars also produce Carbon Monoxide. CO displaces oxygen in the blood stream making it extremely poisonous, and sometimes fatal, to people and animals.

PREVENT CO POISONING

Appliances should be installed, maintained, and used according to manufacturer's instructions and local building codes. Consult a professional when necessary.

- Have heating systems inspected and serviced annually. Chimneys and flues should be checked for blockages, corrosion, partial and complete disconnections, and loose connections.
- Gas appliances such as ranges, ovens, or clothes dryers should not be utilized for heating purposes.
- Portable fuel-burning equipment or charcoal grills should not be used inside a home, garage, or vehicle.
- Turn off any gas-powered engine such as lawn mowers, snowblowers, or chain saws when inside a garage or basement.
- Install and use an exhaust fan vented to outdoors over gas stoves and other fuel burning devices when possible.
- Never sleep in a room with an unvented gas or kerosene space heater.

CARBON MONOXIDE DETECTORS

Since many symptoms of CO poisoning can be easily mistaken for less severe illnesses, and Carbon Monoxide is virtually undetectable by the human senses, it is recommended that CO Detectors be installed throughout homes and buildings. Below are some guidelines for buying and installing CO Detectors.

- Before purchasing a CO Detector, check the packaging to make sure it is listed with Underwriter's Laboratories (UL), Standard 2034 or that it meets the requirements of the IAS 6-96 Standard.
- When choosing a location for the CO detector, make sure it can not be covered by furniture or draperies. Avoid corners as they do not get good circulation.
- Install CO detectors in hallways near each sleeping area of the building.
- Test CO detectors regularly according to the manufacturer's instructions, and make sure they are working properly.

KNOW THE SYMPTOMS

Carbon Monoxide affects people differently based on its concentration in the air, the length of exposure, and each individual's health condition. Symptoms of CO poisoning may include:

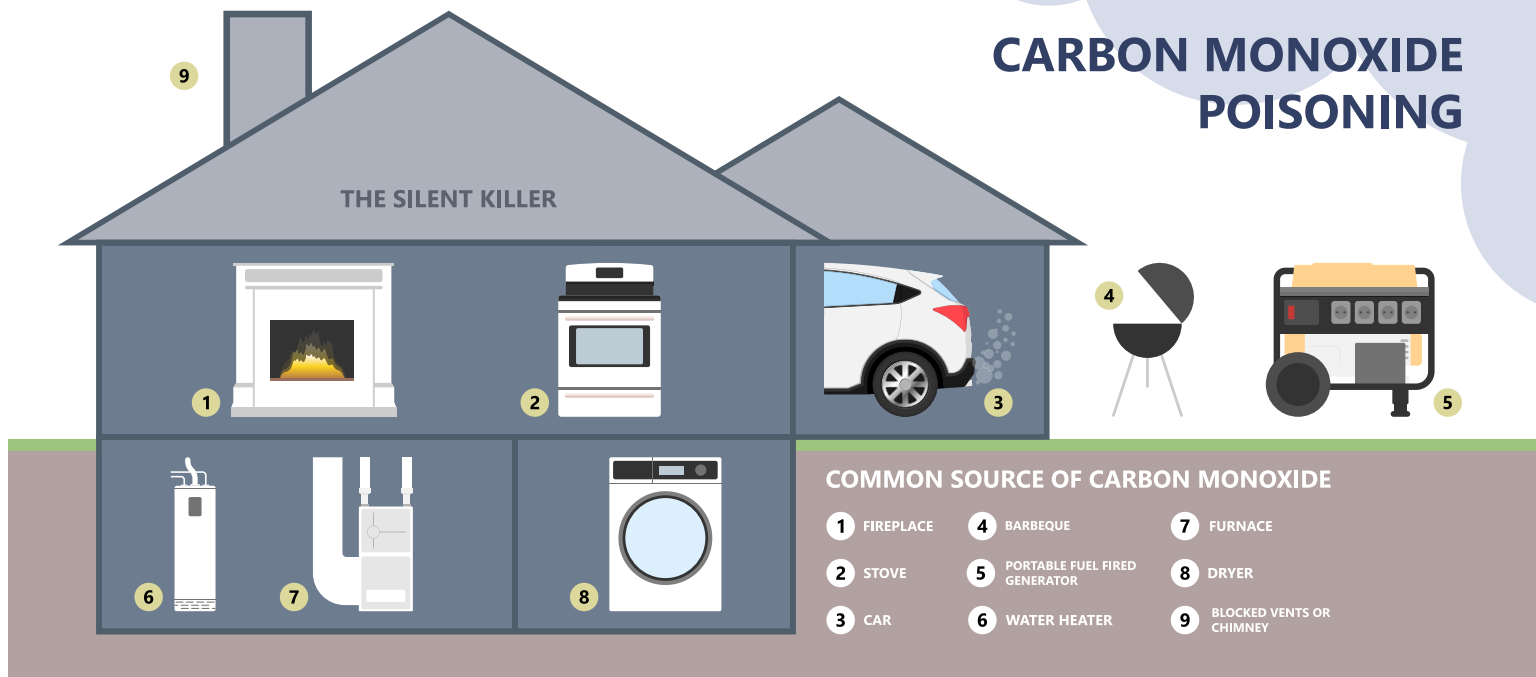
- Headache
- Fatigue
- Nausea
- Dizziness
- Confusion
- Shortness of breath
- Impaired vision
- Impaired coordination
- Loss of consciousness

DID YOU KNOW?

- Over 200 people die and several thousand receive treatment each year due to Carbon Monoxide poisoning.
- CO Detectors cost as little as \$20 and can be purchased at hardware or home goods stores.

CARBON MONOXIDE POISONING

THE SILENT KILLER



IF THE ALARM SOUNDS

- Treat every alarm signal as a real emergency!
- If anyone is experiencing symptoms of CO poisoning, get out of the building immediately and seek medical attention.
- If no one is experiencing symptoms, press the reset button. If the alarm continues to sound, call the fire department.
- Have the building, including all fuel-burning appliances and chimneys inspected by a professional.

LINKS OF INTEREST

www.carbonmonoxidekills.com

Free Carbon Monoxide information and resources

www.epa.gov

U.S. Environmental Protection Agency

www.cpsc.gov

Consumer Product Safety Commission

This loss control brochure is offered in the hope that readers will benefit from it and take adequate steps to avoid conditions that might result in a loss. It does not intend to be a complete discussion of the subject, nor do we guarantee that compliance with its suggestions will assure the safety of persons and/or property.



Irwin Siegel Agency is a series of RSG Specialty, LLC. RSG Specialty, LLC is a Delaware limited liability company and a subsidiary of Ryan Specialty, LLC. In California: RSG Specialty Insurance Services, LLC (License #0G97516).